

SoCalGas Mobility for Maximo (including GIS)

Lev Berkovich

Project Manager

Operations Technology/Gas Engineering/Gas Operations

Southern California Gas Company

Southern California Gas Company (SoCalGas) has been delivering natural gas to its customers for more than 140 years



Nations largest gas
distribution utility:

- Servicing 20.9 M consumers
- Through 5.8 M meters
- > 500 communities
- ~ 20000 square miles

San Diego Gas & Electric Co. and Southern California Gas Co. are regulated subsidiaries of [Sempra Energy](#) (NYSE: SRE). Sempra Energy, based in San Diego, is a Fortune 500 energy services holding company.

Maximo at SoCalGas

Initially implemented in 1998

Used in Transmission and Underground storage

Helps to assure compliance with internal and external regulatory requirements

Serves 300 users, including 30 high level access users, 5 business analysts (super users) and 2 administrators

Making the right choice for Mobility

Vendor/Solution
Requirements:

- Maximo based solutions for agility and productivity
- No Windows solution
- Expertise in iOS/Android development

Mobile
Informer

Four Vendors

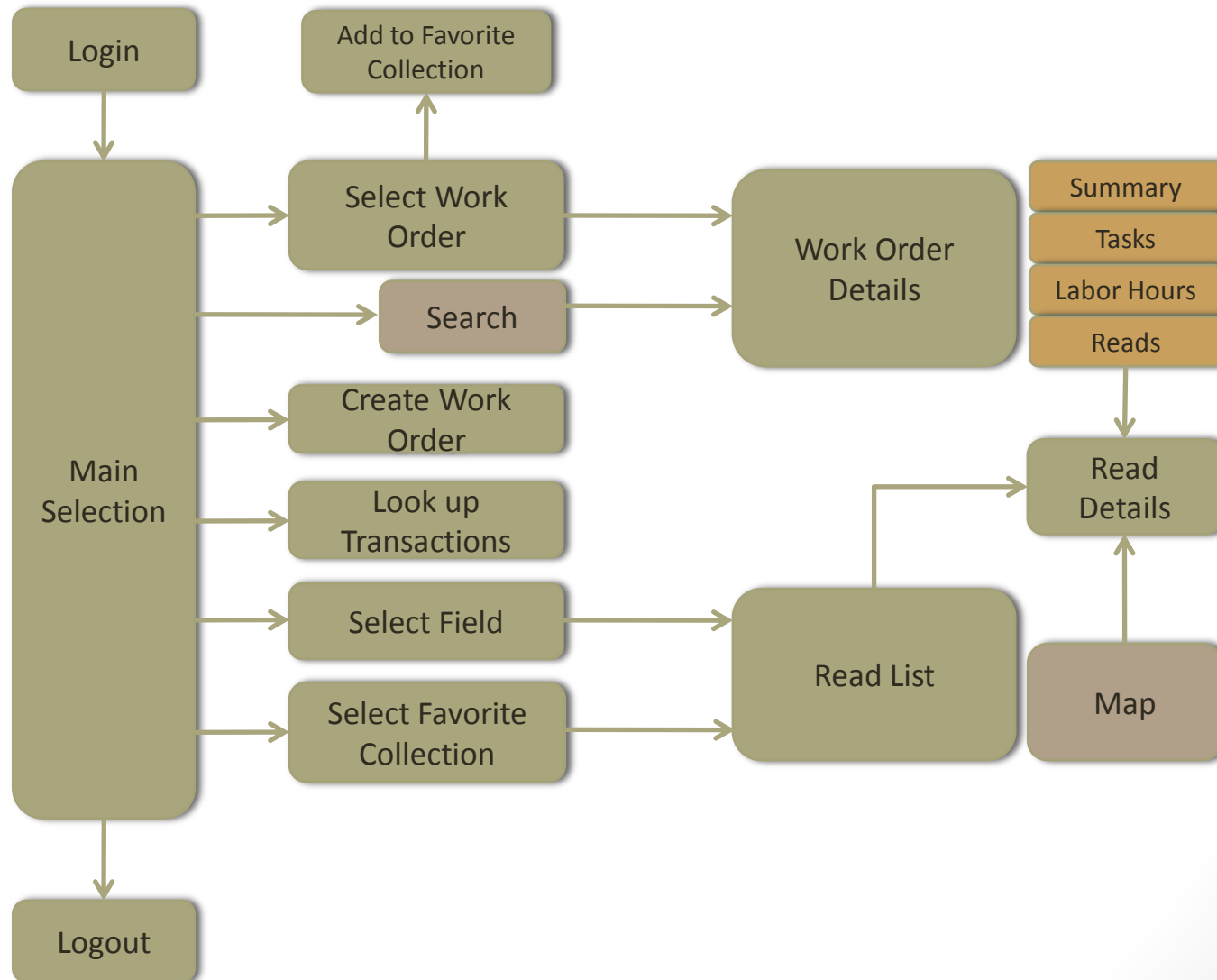
Issued RFP

Mobile solutions address specific needs

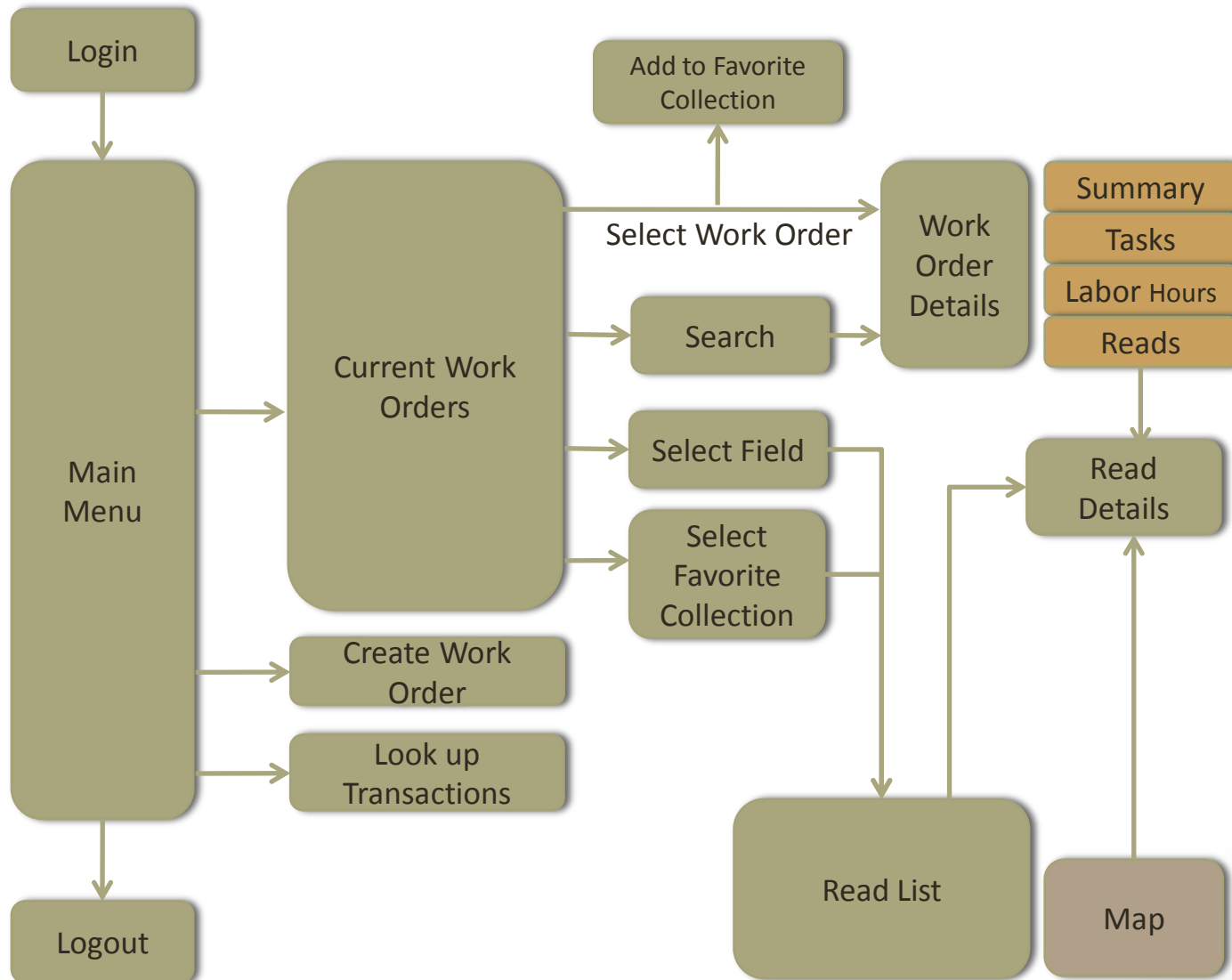
- Optimized screens to take measurements against the meters/assets
- Ability to see previous measurements, where applicable
- Ability to create the follow-up orders, when necessary
- Ability to enter Labor and Failure information and close the Work Order



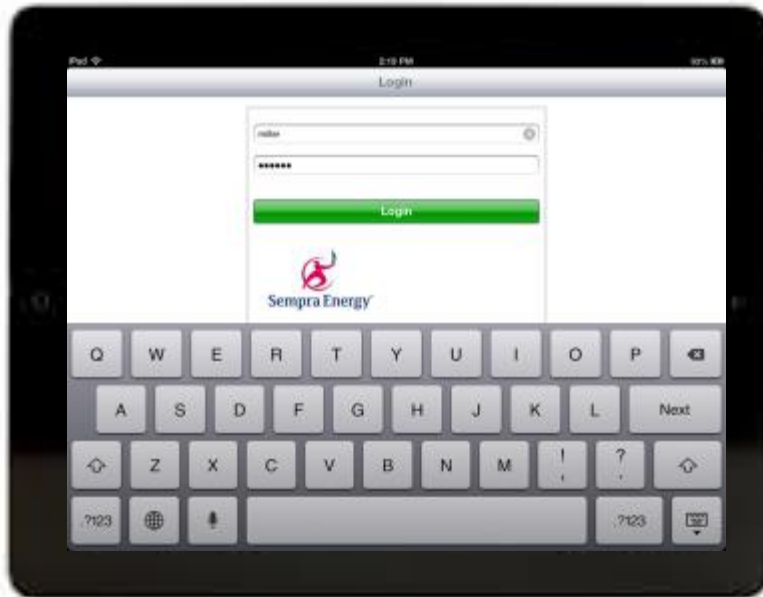
Worker approved navigation: iPad



Worker approved navigation: iPhone



Prototype – Log in



- Log in with your Maximo Credentials

Prototype – Main Selection Screen



- On the left is the Work Orders table
- Tap on the upper left “Worker Orders” button to get the Work Orders tables, including:
 - Current Work Orders
 - Followups for Read
 - Simple Followups

- The table can be sorted by:
 - Target Start Date
 - Target Completion Date
 - Field
 - Work Order Type
- There are indicators on the table indicating the progress and Target Start Date within two weeks.



Prototype – Work Orders



- Add to Collections by tapping on the icon of a folder with a “+”



- View Favorite Collections by tapping on the “Favorite Collections” button on the Toolbar.

Prototype – Work Orders and Details



- Add to Collections by tapping on the icon of a folder with a “+”

- Tapping on a collection will bring out the Reads List-Details view for that collection.

or

- Tap on the Fields List icon on the Toolbar
- Tap on a Field to bring out the Reads List-Details view for that field.



Prototype – Read List Details

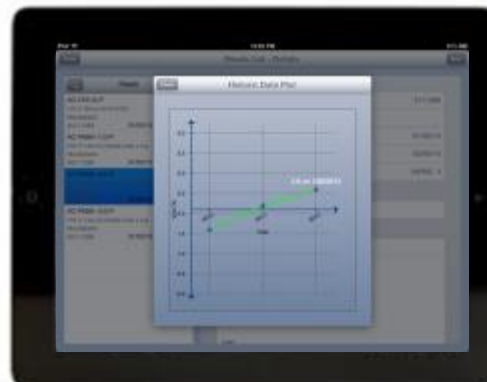
Read List Details



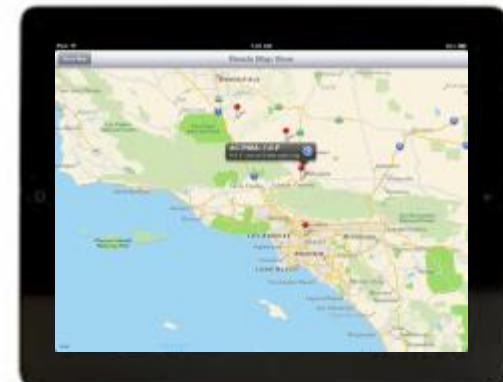
Read Details



Historic Plot Details



Map of Reads

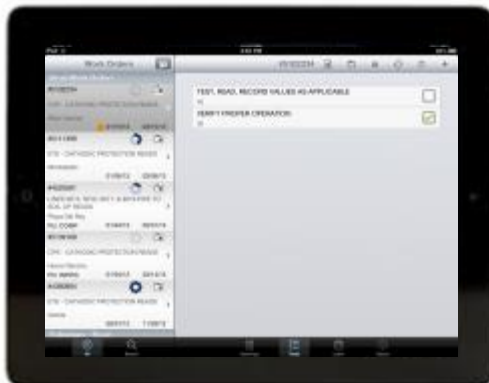


Prototype – Summary

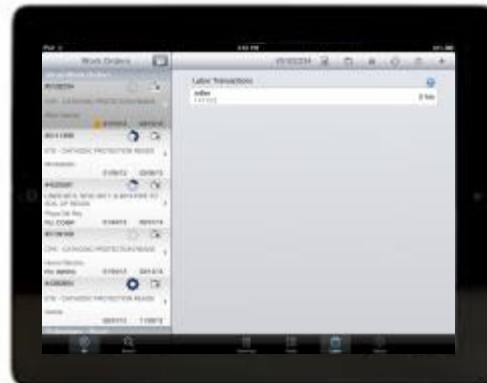
Summary



Task Tab



Labor Hours

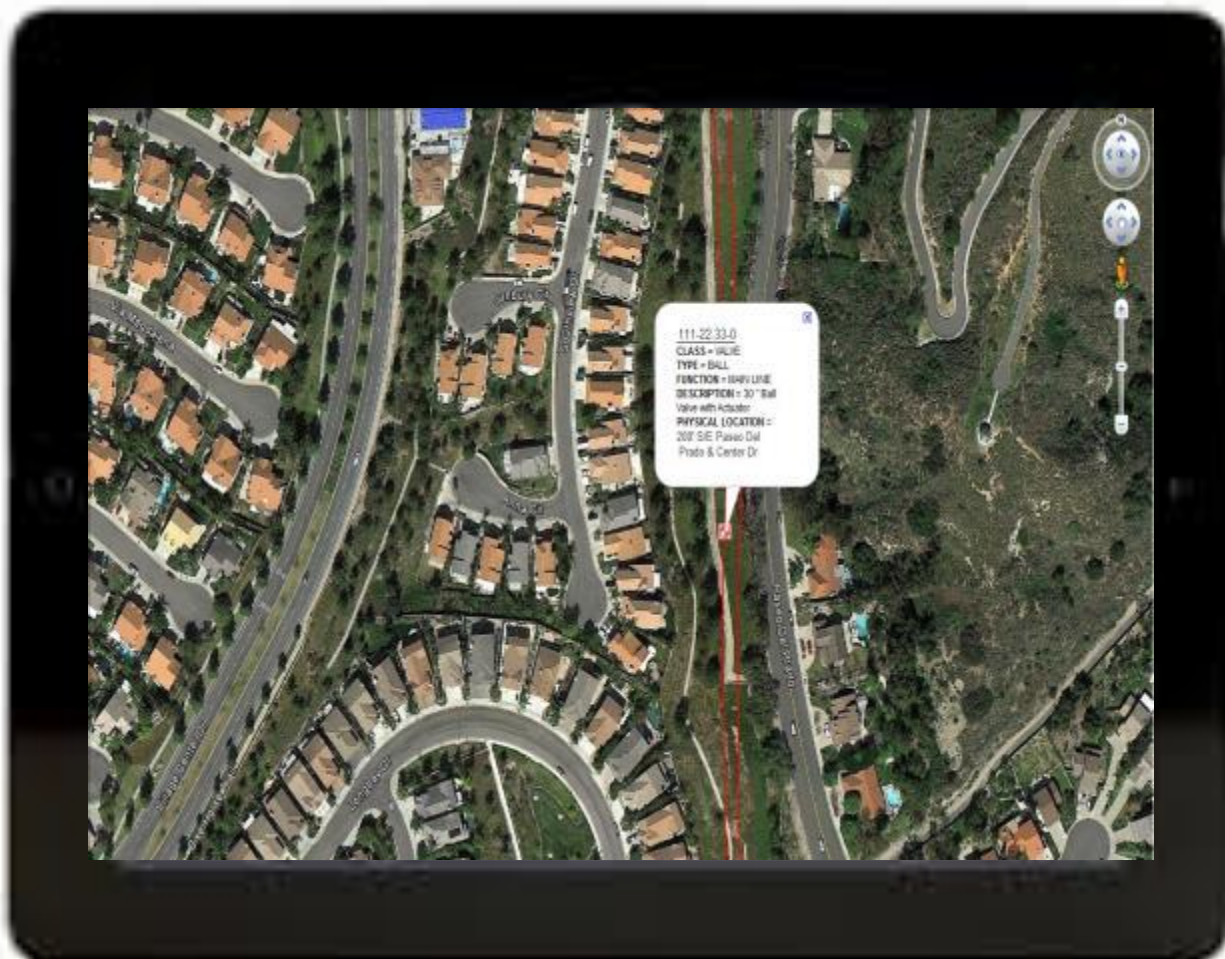


Add Hours and Set Date



5/9/2013

GIS Integration



Future GIS Plans – Integration with InformME



5/9/2013

Future GIS Plans – Integration with InformME



5/9/2013

Future GIS Plans – Integration with InformME



5/9/2013

Future GIS Plans – Integration with InformME

Work sorts by
user
proximity

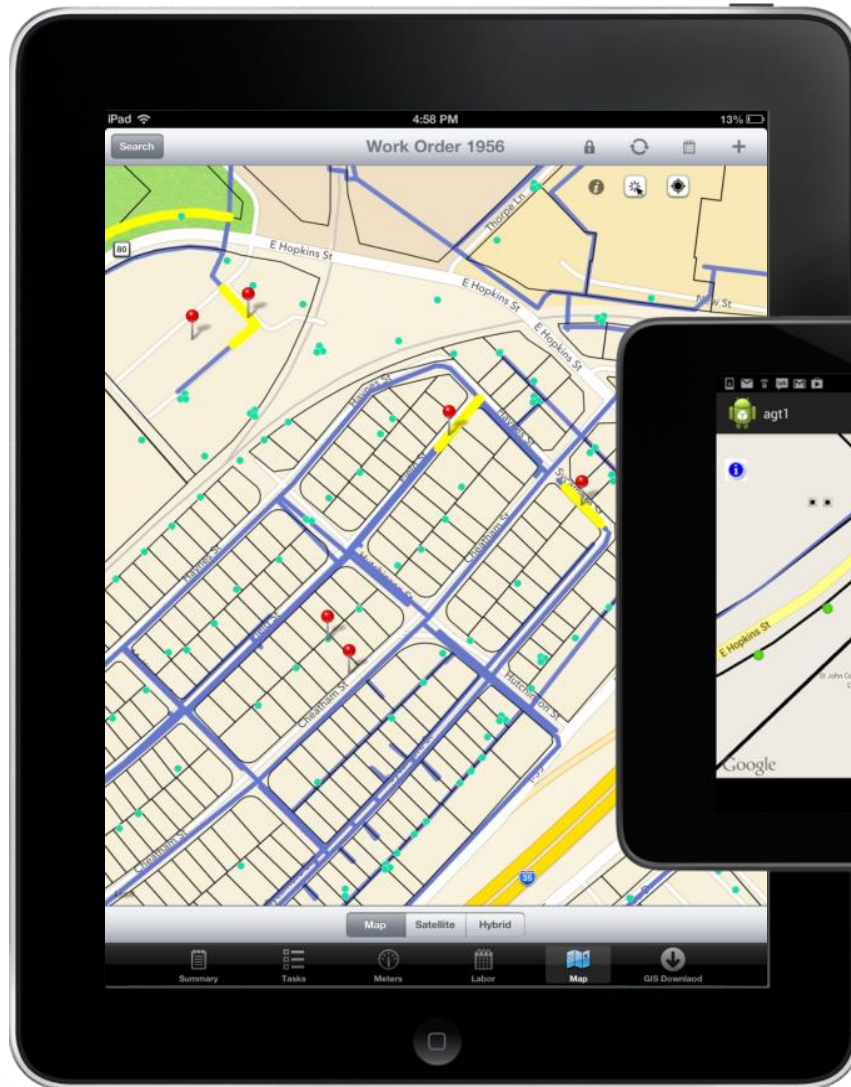
User's
location



5/9/2013

18

Future GIS Plans – Integration with InformME



iOS and Android



5/9/2013

SoCalGas Mobility Goals

- Mobile solution for the Field Measurement Data Collection
- Integration with other systems:
 - GIS using activeG InformME and Mobile Informer
 - OSI PI Historian/ SCADA
 - PDMS (Pipeline Document Management)
- Condition Based Maintenance

Next Steps and Expected Results

- Mobile devices for field data collection:
 - Cathodic Protection reads
 - Field asset data validation
 - Work Order Management
- Benefits expected:
 - Increased productivity
 - Easier regulatory compliance (including internal gas) standards for the Transmission and Storage business units
 - User acceptance, nonintrusive
 - Expanding to other business units



mobile**informer**

next generation Maximo® mobility



Jason VenHuizen
VP, Products and Technology
Interloc Solutions



Truly Successful Mobility for Maximo

- User accepted
- Easy to use and non-intrusive in field
- Supports and enhances your business processes
- Translates between Maximo and mobile user perspectives seamlessly

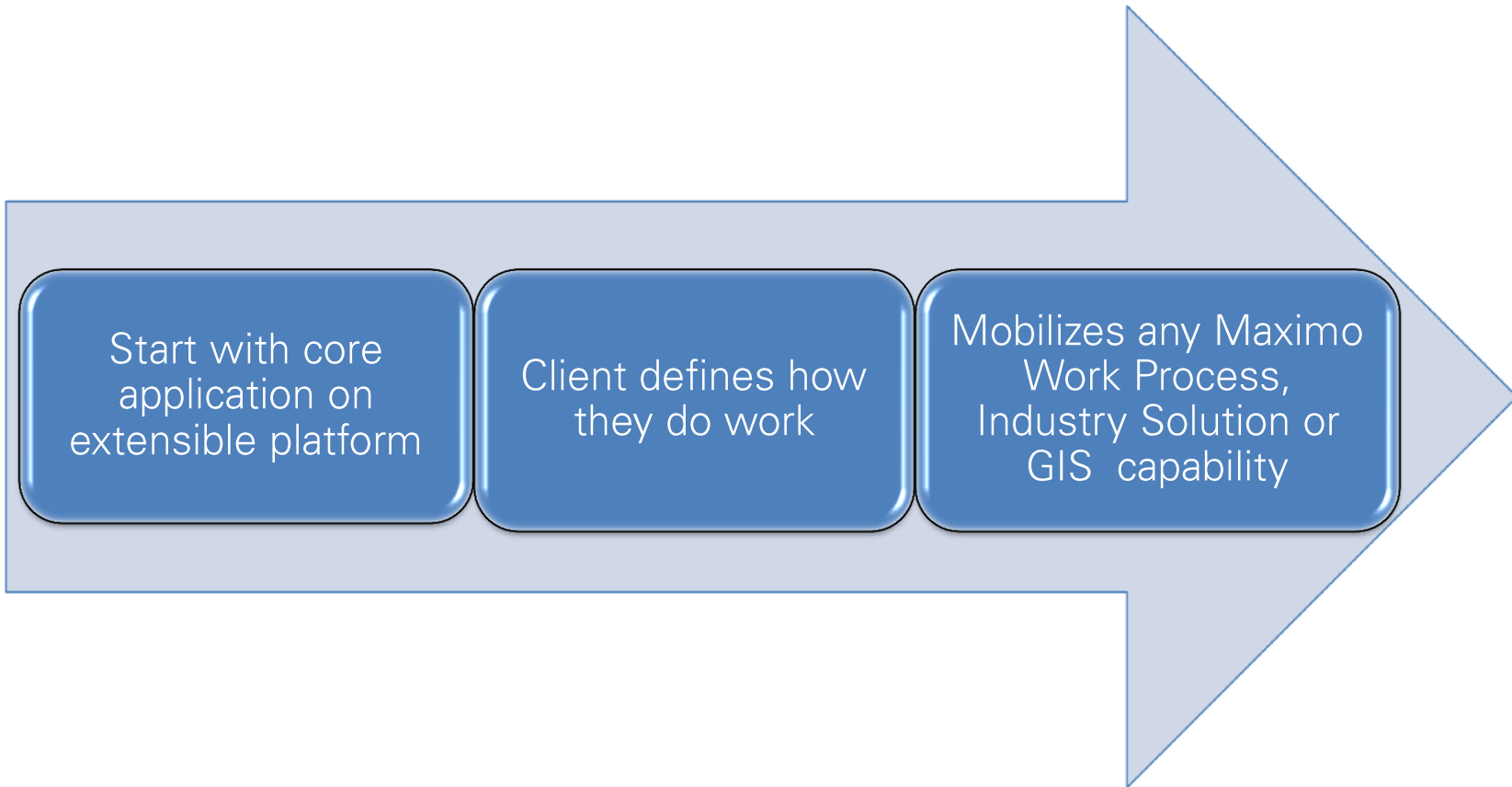


Mobile Informer Attributes



- Is a native Maximo Application providing client-defined apps on Android and iOS
- Allows focus on function, not integration
- Removes constraints on the number of apps that can be delivered
- Does the simplest thing possible

Mobile Informer uses Proven Methodology



Client Benefits

- Focus on client's business functionality
- Provides full access to smart device capabilities
- Leverages existing Maximo infrastructure
- Administration from within Maximo
- Quick adoption; continual ROI
- Disconnected GIS via activeG's InformME

Award-Winning Products and Solutions



IBM Business
Partner Award

2012
Tivoli Software

2012 Winner of 2 IBM Tivoli Awards

- Best of Show for Mobile Informer
- Smarter Planet for Asset Management



IBM Business
Partner Award

2013
Tivoli Software

2013 Winner IBM Tivoli Award

- ISM Library Solution Excellence



IBM Business
Partner Award

2013
Beacon Finalist

2013 Finalist IBM Tivoli Award

- Best Asset and Facilities Management
- Best of Show for Interloc Mailer

2013 Finalist Beacon Award

- Best Solution for Managing the World's Infrastructure

Interloc Solutions / Maximo Skills

- IBM AAA EAM technical accreditation across all of North America
- Proven functional and technical experience in implementing Maximo EAM throughout large enterprises
- Contracted with IBM to provide Level 1 & 2 client software support

Questions?

lberkovich@semprautilities.com
jasonv@interlocsolutions.com
Andy.Stewart@activeg.com